

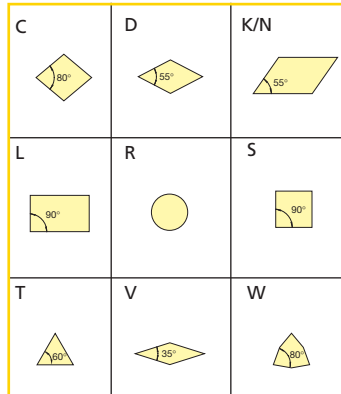
### 1. Insert Holding Method

Example:

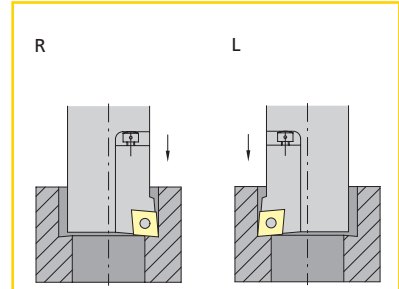
**M**

**C**

**L**



### 2. Insert Shape

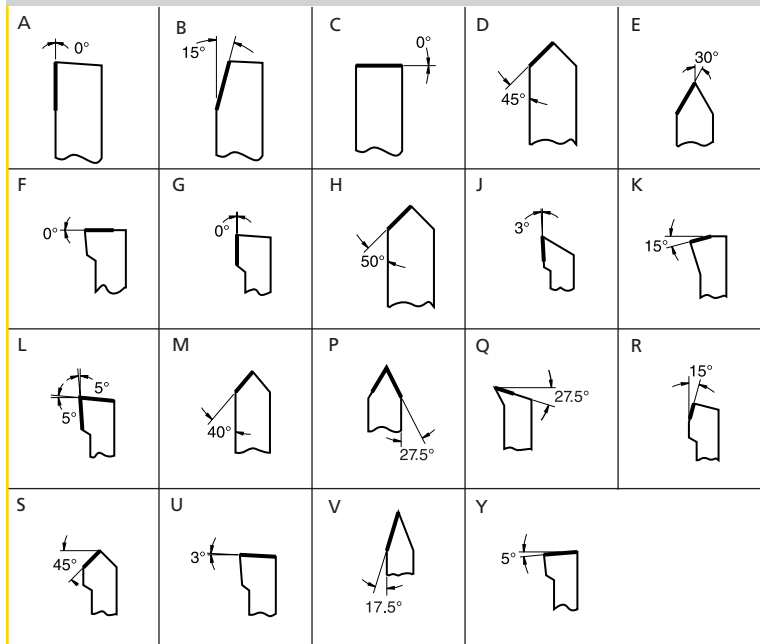


### 5. Hand of Tool

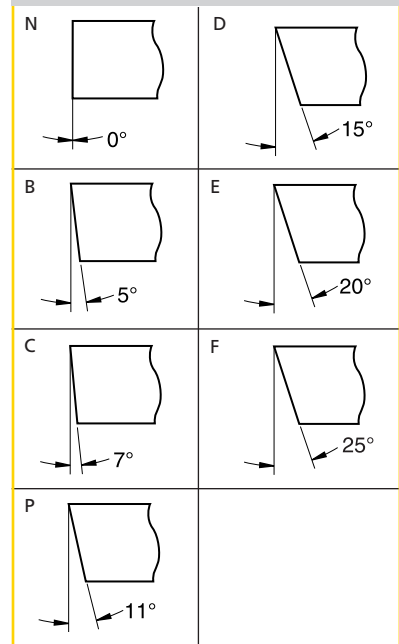
**N**

**R**

### 3. Tool Style or Lead Angle



### 4. Insert Clearance Angle



\*Kennametal standard only

KENLOC  
KENDEX  
TURNING INSERTS  
SCREW-ON  
TOOLHOLDERS  
BORING BARS  
TURNING HOLDERS  
BORING HEADS  
CARTRIDGES

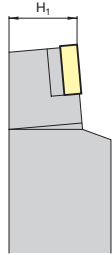


C – Cartridge

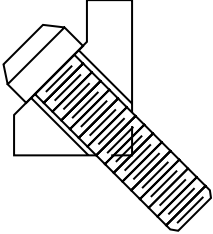
**7. Cartridge Identification**

**20 C**

**6. Cartridge Size**



H = cutting edge height of cartridge, in millimeters.



A – angular acc. ISO 5611

**8. Cartridge Mounting**

**A -**

**Insert IC**  
Number of 1/8ths of "D"

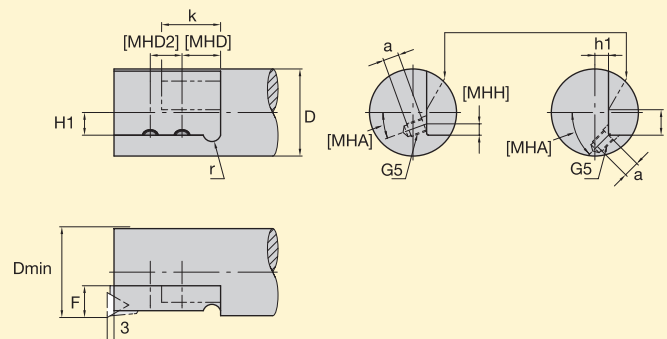
**9. Insert Size**

**4**

**10. Hardware**

C – metric threads, inch hex drive  
A – metric threads, metric hex drive  
T – metric threads, Torx drive

## Cartridge Mounting Dimensions



NOTE: All dimensions below in mm

Size of cartridge	H1	h1	Dmin	D	a	b	[MHD]	F	k	r	[MHH]	[MHD2]	[MHA]	[G5]
06	6	2,0	20	17	10	11	12	8	12,0	4,0	3,5	-	20	M 3,5 x 0,60
08	8	2,5	25	22	10	14	17	10	18,5	5,0	4,5	-	20	M 4,0 x 0,70
10	10	6,0	40	37	14	16	20	14	26,0	8,0	5,0	-	20	M 6,0 x 1,00
12	12	5,0	50	47	14	21	20	20	28,0	9,5	6,0	-	20	M 6,0 x 1,00
16	16	5,0	60	57	15	24	25	25	34,0	9,5	-	-	45	M 8,0 x 1,25
20	20	10,0	70	67	15	31	30	25	36,0	9,5	-	-	45	M 8,0 x 1,25
25	25	18,0	100	97	19	36	30	32	60,0	12,5	-	20	45	M10,0 x 1,50